

## Lookout Endpoint Mobile Security

Protect your devices with the  
leader in mobile security.



### Protect sensitive data

Get visibility and control to help protect your enterprise from mobile threats across the app, device, network and content levels.



### Low cost of ownership

Limit your help-desk tickets with a solution that easily integrates with your existing MDM solution.



### Reduce risk

Set custom policies that help fight against threats and data leakage, which strengthens your ability to maintain compliance.



### Respect for user privacy

Lookout does not collect Image, audio, video files, texts, personal information, or data generated using apps.



### Drive digital transformation

Securely unlock your mobile productivity across personal and corporate-owned devices.



### Easy sign-up

Make deploying and billing easy by adding your mobile security onto any Business Mobile Plans.

## About us

DOCOMO PACIFIC offers a highly diversified range of communication solutions - mobile voice and data, video, broadband, fiber, and GPS tracking services - designed to help you stay connected with the things that matter most.

## Contact us

✉ [business@docomopacific.com](mailto:business@docomopacific.com)

☎ GUAM 671-688-2677  
CNMI 670-488-2677

## Mobile Risks

### Mobile Phishing

With an ever increasing number of phishing and malware sites - clicking links from apps, emails, text messages, and more can compromise any device.

### Downloaded Apps

Everyday apps downloaded from the internet can contain malicious code or access personal and corporation information.

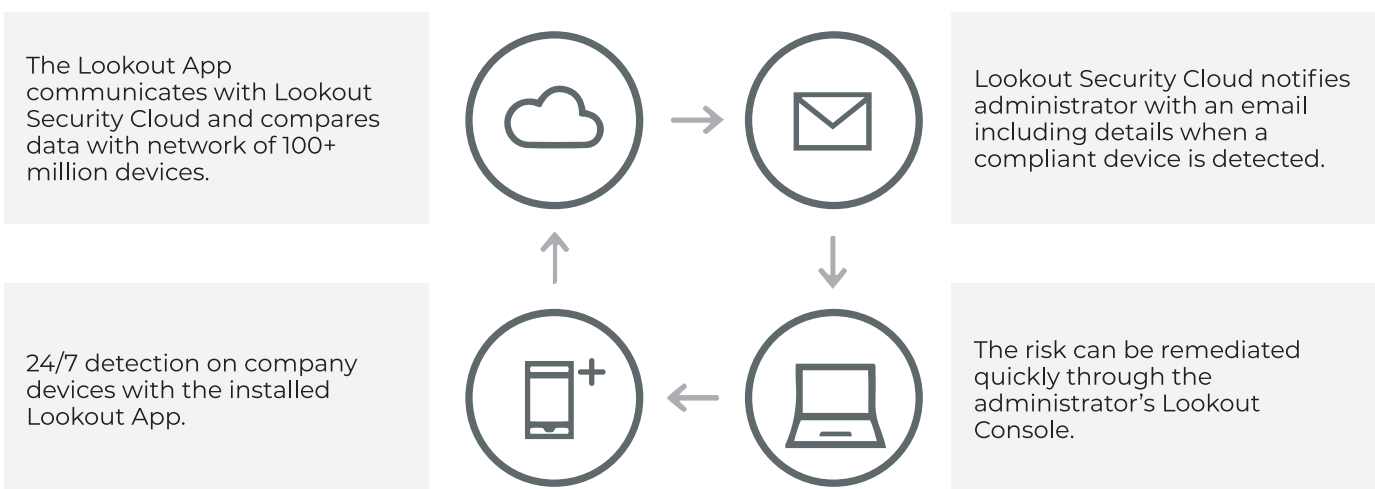
### Networks

Whether you're in your favorite coffee shop or your friend's house, every network has the potential to be unsafe.

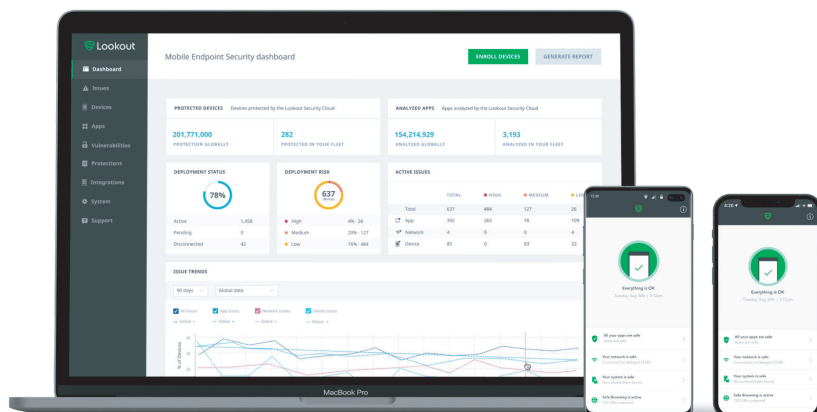
### Devices

Out of date operating systems or software vulnerabilities can lead to your device being exploited.

## How it works



- Install the Lookout app on all your employees' mobile devices for 24/7 threat detection. The app is easily deployed via your company's mobile device management platform or via email.
- Once installed, the app connects to the Lookout Security Cloud, which helps protect you based on security intelligence from a global network of 100 million devices and a massive data set of 40 million mobile apps.
- If any risks are detected, Lookout alerts the end user and sends a notification email to your IT administrator with device and threat details.
- End users can counteract the threat on their device. In addition, the administrator can also remediate possible threats using your organization's mobile device management platform.



The Lookout console lets administrators create and apply security policies and controls for all the devices in your organization. It provides an at-a-glance view of each device's level of access, and as your security protocols change, you can update policies quickly and easily.